

## Pushbutton Enclosure, 4 Hole, 22.5, Polyester, Gray



### LC-PCG-0825-1 B4

#### Features

- Pre-drilled for operator or pilot type switches
- Available in 1,2,3 or 4 hole options
- This product is pre-processed with 22.5mm or 30.5mm holes
- PC/PBT Blend (polycarbonate / polyester blend) is a thermoplastic alloy of amorphous polycarbonate and semi-crystalline polyester. PC/PBT provides a combination of chemical resistance, temperature resistance, and mechanical strength
- Temperature Range: Continuous -40 to +75. Short Time C -40 to +100 C
- UL, CE, RoHS Compliant
- Material Grade Type 4X, Ingress Protection IP67, strength grade IK 08

#### Applications

- Indoor and Outdoor installations
- Hot and corrosive environments
- Operator or pilot type switch installations
- Holes in the cover allow easy installation of push buttons, switches, and indicating lights

#### Description

L-com's LC-PCG-0825-1 B4 is a control switch box enclosure for 22.5 devices, intended for both indoor and outdoor use as a pushbutton and operator switch enclosure. This enclosure is made from molded polyester material with a matching cover and is easily punched, cut, or drilled. The switch box enclosure has a 1 hole option. Our pushbutton enclosure is in stock and available for same business day shipping.

Our gray enclosure provides outstanding insulation and protection where equipment may be rinsed or be very wet. The switch box enclosure is available in 80mm width, 250mm height and 85mm depth. L-com's LC-PCG-0825-1 B4 switch box enclosure is impact and corrosion resistant and is perfect for harsh environments. This 4 hole pushbutton enclosure is suitable for industrial, municipal, medical, campus pushbutton or pilot switch enclosure applications.

L-com has one of the largest in-stock selections of polyester pushbutton enclosures for local, domestic and international orders. We serve the petrochemical, metallurgy, mining, wastewater treatment, automotive, oil and gas industries. For further information on similar products, our expert technical support and knowledgeable sales team can help you get the perfect gray control switch box enclosures as per your requirements.

#### Mechanical Specifications

##### Size

Outer Height	9.84 in	[249.94 mm]
Outer Width	3.15 in	[80.01 mm]
Outer Depth	3.35 in	[85.09 mm]
Enclosure Material	Polyester	

##### Mechanical Specification Notes:

This product is pre-processed with 22.5mm or 30.5mm holes. A = 30.5mm Hole / 1= 1Hole, 2=2Hole, 3=3Hole, 4=4Hole B = 22.5mm Hole / 1= 1Hole, 2=2Hole, 3=3Hole, 4=4Hole

Pushbutton Enclosure, 4 Hole, 22.5, Polyester, Gray



**LC-PCG-0825-1 B4**

Material	ABS	AC	POLYCARBONATE (Lexan 9434/1230)	POLYESTER	NYLON
Outdoor Use	▲	***	***	*****	*
Indoor Use	***	*****	*****	*****	*****
Robustness	*	***	***	***	***
Lightweight	*****	*****	*****	*****	*****
Impact Resistance	***	*****	*****	*****	***
Alcohols	***	N	***	***	***
Ketones	▲	▲	▲	▲	N
Esters	*	*	*	▲	N
Alkalis	*	*	▲	▲	N
Oils (unsaturated aliphatic mixtures)	***	*	N	*****	N
Waxes (heavy oils)	***	***	N	***	N
Brake fluid	▲	▲	N	*****	N
Hot water (80°C or Higher)	***	***	N	***	N

\*\*\*\*\* (Very Good - unaffected in its performance with regard to time, temperature and stress)  
 \*\*\* (Good - acceptable in normal exposure, but higher temperatures may result in major loss of properties)  
 \* (Fair - only for short exposures at lower temperatures or when loss of mechanical properties is not critical)  
 ▲ (Poor - not recommended)  
 N (not tested)

**Environmental Specifications**

Temperature Continuous

-40 to +75°C

**Compliance Certifications**

**Additional Data**

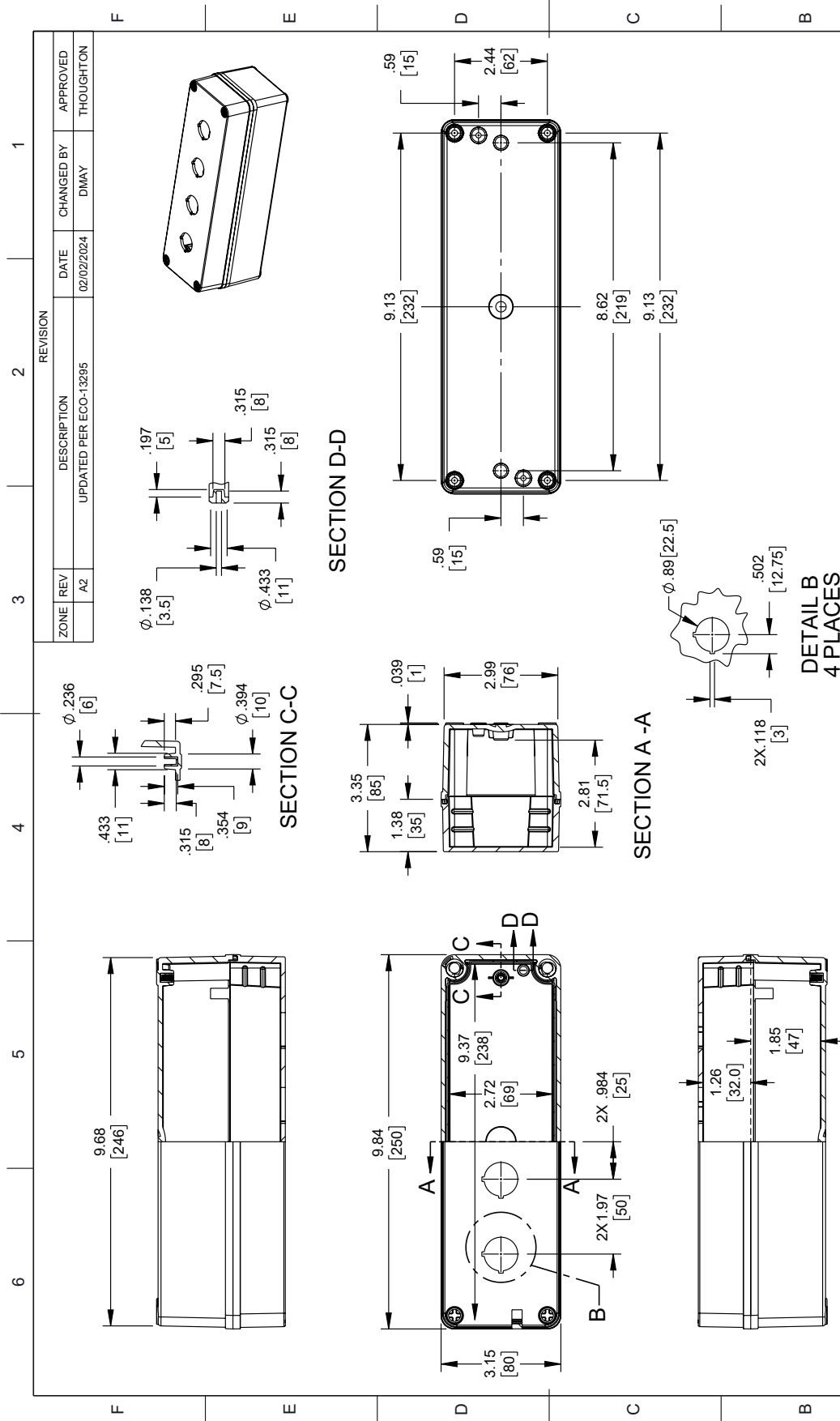
Pushbutton Enclosure, 4 Hole, 22.5, Polyester, Gray from L-com has same day shipment for domestic and International orders. Our portfolio includes coaxial cable assemblies, connectors, adapters and custom products as well as lightning and surge protectors, NEMA rated enclosures, and an RF product line which includes antennas, amplifiers, passive, and active components.

URL: <https://www.l-com.com/pushbutton-enclosure-4-hole-22.5-polyester-gray-lc-pcg-0825-1-b4-p.aspx>

The information contained within this document is accurate to the best of our knowledge and representative of the part described herein. It may be necessary to make modifications to the part and/or the documentation of the part in order to implement improvements. L-com reserves the right to make such changes as required. Unless otherwise stated, all specifications are nominal. L-com does not make any representation or warranty regarding the suitability of the part described herein for any particular purpose, and L-com does not assume liability arising out of the use of any part or document.

# LC-PCG-0825-1 B4 CAD Drawing

Pushbutton Enclosure, 4 Hole, 22.5, Polyester, Gray



ZONE	REV	DESCRIPTION	DATE	CHANGED BY	APPROVED
	A2	UPDATED PER ECO-13295	02/02/2024	DMAY	THOUGHTON

 <b>L-com</b> an INFINITE brand Website: www.L-com.com Phone: 1.800.341.5266   1.978.682.6936		 INTERPRET ALL DIMENSIONS AND TOLERANCES PER ASME Y14.5 SCALE: NONE SHEET: 1 OF 1
DESCRIPTION: PUSHBUTTON ENCLOSURE, 4 HOLE, 22.5MM, POLYESTER, GRAY		
SIZE: A	CAGE CODE: 43321	ITEM NO.: LC-PCG-0825-1-B4
DRAWN BY: KGLEBOVA		REV: A2

UNLESS OTHERWISE SPECIFIED, DIMENSIONS ARE IN INCHES AND DIMENSIONS IN PARENTHESES ARE IN MILLIMETERS.	TOLERANCES:
X = ±.2 (51) FRACTIONS XX = ±.02 (0.51) ANGLES ± 1° XXX = ±.005 (0.13)	CABLE LENGTH TOLERANCES: >12 (305) ± .60 (15.24) = ±.2 (51) / 0 >60 (1524) ± 1.20 (30.48) = ±.4 (10.2) / 0 >120 (3048) ± 3.00 (76.20) = ±.9 (22.9) / 0 >300 (7620) ± 6.00 (152.4) = ±1.8 (45.7) / 0
ALL DIMENSIONS ARE FOR REFERENCE ONLY. DIMENSIONS OF NON-CRITICAL FEATURES MAY VARY IN SIZE AND LOCATION. COLORS MAY VARY.	

NOTES:

- COMPONENT SHALL BE INDIVIDUALLY PACKAGED IN ACCORDANCE WITH L-COM SPECIFICATION PS-0031.
- ALL DIMENSIONS ARE FOR REFERENCE ONLY.

REGULATORY COMPLIANCE:  
EU RoHS DIRECTIVE (MOST RECENTLY RELEASED VERSION).

THE INFORMATION CONTAINED IN THIS DRAWING IS THE SOLE PROPERTY OF INFINITE ELECTRONICS, INC. ANY REPRODUCTION IN PART OR WHOLE WITHOUT THE WRITTEN PERMISSION OF INFINITE ELECTRONICS, INC. IS PROHIBITED. THESE COMMODITIES, TECHNOLOGY OR SOFTWARE WERE EXPORTED FROM THE UNITED STATES IN ACCORDANCE WITH THE EXPORT ADMINISTRATION REGULATIONS. DIVERSION CONTRARY TO U.S. LAW IS PROHIBITED.